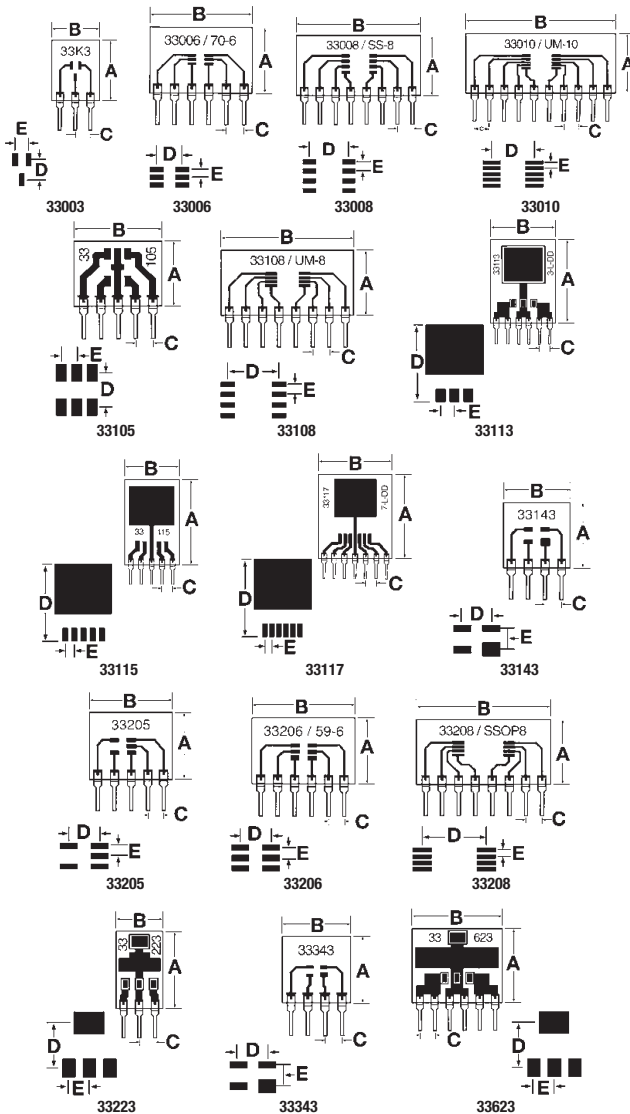


33000 SERIES APPLICATION-SPECIFIC SURFACE MOUNT ADAPTERS



33000 series adapters for several popular discrete devices and small pin count ICs. These adapters provide direct pin out of device leads to SIP pins on 0.100" centers.

Mfg. Part No.	Dim. A Inch(mm)	Dim. B Inch(mm)	Dim. C Inch(mm)	Dim. D Inch(mm)	Dim. E Inch(mm)
33003	.400(10.16)	.300(7.62)	1.00(2.54)	.080(2.03)	.0512(1.30)
33006	.400(10.16)	.600(15.24)	1.00(2.54)	.090(2.28)	.0256(.650)
33008	.400(10.16)	.800(20.32)	1.00(2.54)	.180(4.57)	.0375(.9530)
33010	.400(10.16)	1.0(25.4)	1.00(2.54)	.200(5.08)	.0197(.500)
33105	.400(10.16)	.500(12.7)	1.00(2.54)	.165(4.19)	.060(1.50)
33108	.400(10.16)	.800(20.32)	1.00(2.54)	.200(5.08)	.0256(.650)
33113	.800(20.32)	.600(15.24)	1.00(2.54)	.625(15.87)	.100(2.54)
33115	.800(20.32)	.500(12.7)	1.00(2.54)	.625(15.87)	.067(1.70)
33117	.800(20.32)	.700(17.78)	1.00(2.54)	.625(15.87)	.067(1.70)
33143	.400(10.16)	.400(10.16)	1.00(2.54)	.100(2.54)	.078(1.99)
33205	.400(10.16)	.500(12.7)	1.00(2.54)	.110(2.79)	.0375(.9530)
33206	.400(10.16)	.600(15.24)	1.00(2.54)	.110(2.79)	.0375(.9530)
33208	.400(10.16)	.800(20.32)	1.00(2.54)	.300(7.62)	.025(.650)
33213	1.125(28.57)	.850(21.59)	1.00(2.54)	.625(15.87)	1.00(2.54)
33223	.500(12.7)	.300(7.62)	1.00(2.54)	.275(6.98)	.090(2.28)
33343	.400(10.16)	.400(10.16)	1.00(2.54)	.080(2.03)	.051(1.3)
33623	.500(12.7)	.600(15.24)	1.00(2.54)	.275(6.98)	.090(2.28)

Mfg. Part No.	Accepts These Devices	Pins	Stock No.	Price Each
33003	SC-70-3, SOT-323, NEC Pkg.-30	3	10M5364	0.98
33006	SX-70-6, SOT-363	6	10M5365	1.99
33008	SUPERSOT-8 (Fairchild)	8	48F4863	2.69
33010	MICROMAX-10 (Maxim)	10	10M5366	3.10
33105	SOT-89-5	5	48F4865	1.74

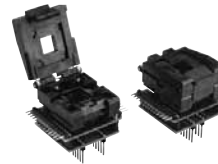
▶ CONTINUED ▶

33000 SERIES APPLICATION-SPECIFIC SURFACE MOUNT ADAPTERS (CONT.)

Mfg. Part No.	Accepts These Devices	Pins	Stock No.	Price Each
33108	MSOP-8, TSSOP-8, MICROMAX-8, MICRO-8, MINI SO-8	8	10M5367	2.69
33113	TO-263-AB, 3-LEAD D Pkg.*	6	48F4867	2.74
33115	5-LEAD DD Pkg.	5	48F4868	2.29
33117	7-LEAD DD Pkg.	7	48F4869	3.10
33143	SOT-143	4	48F4870	1.47
33205	SOT-23-5, SC-59-5, BURR-BROWN PKG-331, TINYLOGIC (Fairchild), MICROGATE (TI)	5	10M5368	1.79
33206	SOT-23-6, SOT-23-L, SC-59-6, TSSOP-6, SUPERSOT-6 (Fairchild), MICRO-6 (LR)	6	10M5369	1.99
33208	SSOP-8	8	10M5370	2.69
33223	SOT-223	3	48F4875	1.22
33343	SOT-343	4	48F4876	1.47
33623	SOT-223*	6	48F4877	2.22

*2 output pins per device are provided for higher current applications (42471)

PROGRAMMING ADAPTERS

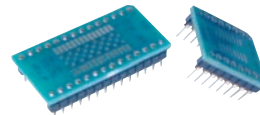


Allows use of any programmer designed for a DIP socket to program SOIC, SSOP and PLCC. All are wired 1 to 1. Can be used for production ATE testing. Test points are provided for each signal in most adapters. Sturdy base contact pins. Additional pin counts and package styles available; go online or call.

Mfg. Part No.	No. of Pins	Pkg. Style	Body Width (mm)	Lead Pitch (mm)	Stock No.	Price Each
AS-08-08-01S-3	8	SOIC	3.8	0.635	18C0716	101.62
AS-28-28-02SS-6ENP-GANG	28	SSOP	5.3	0.65	18C0717	113.40
AS-28-28-03S-6-GANG	28	SOIC	7.5	1.27	18C0718	128.93

(61973)

PROTOTYPING ADAPTERS



Ideal for project development, these SSOP and TSSOP prototyping adapters come in various pin counts. Other configurations are available; go online or call.

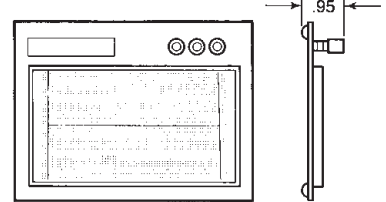
Mfg. Part No.	Description	Lead Pitch (mm)	Body Width (mm)	Stock No.	Price Each
AB-028-SS01S-A-M	20-28 Pin SSOP	0.635	3.8 to 7.6	19C5683	48.77
AB-020-ST03S-A-M	8-20 Pin TSSOP	0.65	4.4 to 8	19C5687	36.18
AB-020-ST33S-A-M	8-20 Pin TSSOP	0.50	3 to 9.90	19C5690	36.18

(65284)

300 SERIES SOLDERLESS BREADBOARDS



For easy, solderless plug-in circuit building. Terminal positions contain electrically connected tie-points spaced on a continuous 0.100" matrix to accept any component with 0.100" lead spacing. Five-way binding posts provide interface for connections from power supplies, signal generators or other equipment. Steel base has baked enamel finish. Rubber feet reduce sliding during bench work. Jumper wires included.



Mfg. Part No.	L x W (in.)	Tie Points	Binding Posts	Stock No.	Price Each
922306	4 x 5.4	610	2	92F1460	28.34
922309	4 x 7	840	3	92F1461	31.93
922318	6.25 x 7.75	1824	3	92F1462	55.80
922327	9.25 x 8	2712	4	92F1463	89.38
922336	9.25 x 10.25	3648	4	92F1464	92.74
922354	9.75 x 14.69	5424	4	92F1466	142.40

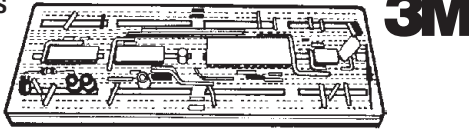
(3807)

BREADBOARDS

1

MINI-BREADBOARDS

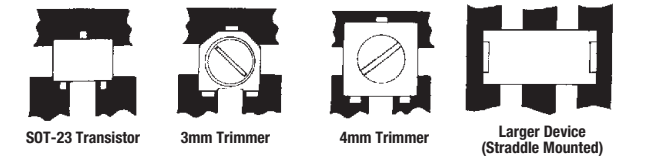
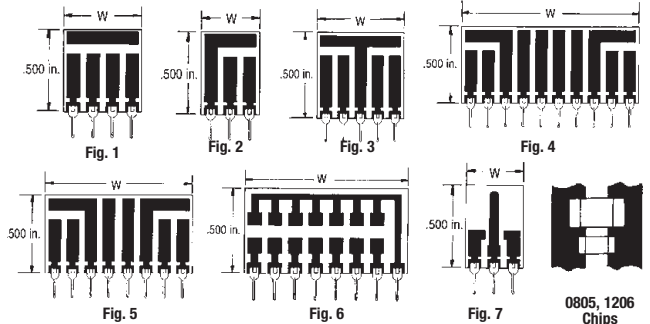
Mfg. Part No. 923252 combines 0.1 x 0.1" solderless tie point matrix with eight 25-tie-point distribution buses each for power, ground, signal lines. 6.5L x 2.25"W. Mfg. Part No. 923253 combines solderless tie point matrix with four 35-tie-point distribution buses each for power, ground, signal lines. 4.9L x 2.25"W.



Mfg. Part No.	Stock No.	Price Each	
		1-4	5-9
923252	65F120	31.93	29.45
923253	81F1388	18.77	17.31

(3791)

6000 SERIES SURFBOARDS-SMT BREAD BREADBOARDS



- Specifications:**
- 0.1" (2.54mm) Pin Spacing
 - 0.5" (12.7mm) Board Height
 - Material: 0.31" (±0.005") Thick FR4 Glass Epoxy or Equivalent
 - Circuits: 1 Oz. Copper with Solder-Coated Pads
 - SIP (Single In-Line) Pins
 - Compatible with Standard and Solderless Breadboards and Sockets
- Applications:**
- Amplifier Circuits
 - Component and Transistor Arrays
 - Switching Circuits
 - Control Circuits
 - Specialized Networks
 - Interface Circuits

Surfboards are large foil pad areas which may be modified to create additional part mounting zone or extend layout options. Surfboards also feature built-in custom SIP (single in-line pin) circuits that are suitable for prototyping and short-run production circuits. Figs. 1-7 show the basic pattern for each 6000 series model. The pattern is repeated in models with higher pin count (see table below).

6000 SERIES FOR DISCRETE COMPONENTS

Mfg. Part No.	Fig.	Pins	Width (W)	Stock No.	Price Each		
					1-9	10-24	25-49
● 6004	1	4	0.400"	10M5390	1.69	1.61	1.52
● 6006	1	6	0.600"	52F1416	2.03	1.94	1.83
● 6007	1	7	0.700"	52F1417	2.25	2.15	2.03
● 6008	1	8	0.800"	52F1418	2.48	2.37	2.24
● 6010	1	10	1.00"	52F1419	3.04	2.91	2.75
● 6012	1	12	1.20"	52F1420	3.61	3.45	3.26
● 6103	2	3	0.300"	10M5391	1.46	1.40	1.32
● 6106	2	6	0.600"	52F1422	2.03	1.94	1.83
● 6109	2	9	0.900"	52F1423	2.59	2.48	2.34
● 6112	2	12	1.20"	52F1424	3.61	3.45	3.26
● 6115	2	15	1.50"	52F1425	4.17	3.99	3.77
● 6405	3	5	0.500"	10M5392	1.91	1.83	1.73
● 6410	3	10	1.00"	52F1430	3.04	2.91	2.75
● 6415	3	15	1.50"	52F1431	4.17	3.99	3.77
● 6510	4	10	1.00"	52F1432	3.04	2.91	2.75
● 6520	4	20	2.00"	16M1419	5.08	4.85	4.58
● 6808	5	8	0.800"	52F1434	2.48	2.37	2.24
● 6816	5	16	1.60"	52F1435	4.06	3.88	3.67

SURFBOARDS FOR 1206 AND MINI-MELF PACKAGES

● 6908	6	8	0.800"	10M5393	2.48	2.37	2.24
● 6916	6	16	1.60"	52F1437	4.06	3.88	3.67

▶ CONTINUED ▶

6000 SERIES SURFBOARDS-SMT BREAD BREADBOARDS (CONT.)

SURFBOARDS FOR SOT-89 PACKAGES

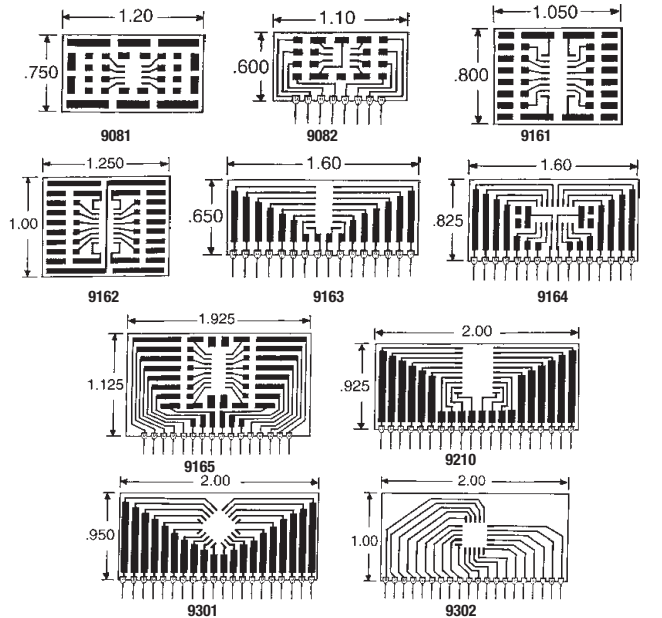
Mfg. Part No.	Fig.	Pins	Width (W)	Stock No.	Price Each		
					1-9	10-24	25-49
● 6303	7	16	1.60"	52F1426	1.46	1.40	1.32
● 6306	7	16	1.60"	52F1427	2.03	1.94	1.83
● 6309	3	16	1.60"	52F1428	2.59	2.48	2.34

Mfg. part no. MK-6000 master kit includes 2 each of the 23 models listed in the 6000 series of surfboards designed for discrete components.

Mfg. Part No.	Description	Stock No.	Price Each		
			1-2	3-4	5+
● MK-6000	Master Kit	10M5237	109.89	104.94	100.98

(11226)

9000 SERIES SURFBOARDS - SMT BREADBOARDS FOR ICs



- Specifications:**
- 0.1" (2.54mm) Pin Spacing
 - Material: 0.31" (±0.005") Thick FR4 Glass Epoxy or Equivalent
 - Circuits: 1 Oz. Copper with Solder-Coated Pads
 - SIP (Single In-Line) Pins
 - Compatible with Standard and Solderless Breadboards and Sockets
- Applications:**
- Prototype Circuits
 - On-Board Bypass Capacitors
 - Plug-In Test Circuits
 - Adapting SMD to Thru-Hole

Surfboards are large foil pad areas that may be modified to create additional part mounting zone or expert layout options. They are designed for SOIC and PLCC packages, providing standard IC footprints, as well as direct pin-out of IC to SIP pins, depending on the module chosen. All 9000 series surfboards feature pins on 0.100" centers, except mfg. part nos. 9081, 9161, and 9162.

8-PIN SOIC

Mfg. Part No.	Pins	Capacity	Stock No.	Price Each		
				1-9	10-24	25-49
● 9081	8	1 to 8-pin SOIC	52F1439	1.57	1.51	1.42
● 9082	8	1 to 8-pin SOIC	52F1440	4.06	3.88	3.67

16-PIN SOIC

● 9161	16	1 to 16-pin SOIC	10M5394	2.03	1.94	1.83
● 9162	16	1 to 16-pin SOIC	52F1442	2.14	2.05	1.93
● 9163	16	1 to 16-pin SOIC	52F1443	6.21	5.93	5.60
● 9164	16	1 to 16-pin SOIC	52F1444	6.43	6.15	5.81
● 9165	16	1 to 16-pin SOIC	52F1445	6.77	6.47	6.11

20-PIN, 0.3" (7.62) WIDE

● 9210	20	1 to 20-pin (w) SOIC	10M5395	7.34	7.01	6.62
--------	----	----------------------	---------	------	------	------

20-PIN PLCC

● 9301	20	1 to 20-pin PLCC	10M5396	7.34	7.01	6.62
● 9302	20	1 to 20-pin PLCC	52F1448	7.34	7.01	6.62

Mfg. part no. MK-9000 master kit includes 5 each of mfg. part nos. 9081, 9082, 9161, and 9162 and 2 each of mfg. part nos. 9163, 9164, 9165, 9210, 9301, and 9302.

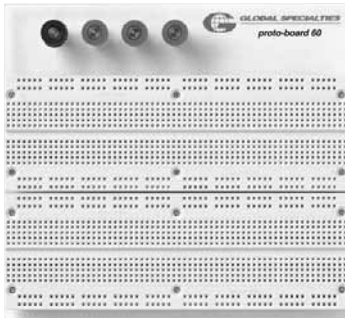
Mfg. Part No.	Description	Stock No.	Price Each
			1-2
● MK-9000	Master Kit	52F1449	109.89

(3814)

TRANSPARENT PROTOTYPING BOARD



- 1680 Tie Points
- IC Capacity for 16 ICs (Based on 14-Pin ICs)
- Nickel Silver Alloy Pins are Pre-Stressed, Spring-Loaded and Non-Corrosive for Long-Term Reliability
- Molded in Rugged Thermoplastic for Durability and High-Temperature Applications
- Perfect for Educational Purposes, Product Design, Test Fixture Design, Quality Control, and Hobbyists
- 4 Binding Posts (3 Red, 1 Black)
- Plexiglass Backplate



Mfg. Part No. PB-60 Transparent Proto-Board is a special breadboard designed specifically for training and features a transparent back that allows students to actually see how it works. 2 Global UBS-100s are screwed to a clear Plexiglass plate, leaving the pin layout and bus strip connections clearly visible, which is ideal for teaching circuit continuity. 3 red posts and 1 black post are provided for voltage or signal connections. 4 rubber feet keep the unit from sliding on the work surface. Wire size: #22 AWG, component leads .01-.033" (.25-.84) acceptable, 0.15-.032" (.38-.81) recommended. Resistance: Initial contact resistance less than 0.5mΩ, after multiple uses less than 0.4mΩ. Size: 1.4x6.5x6" (HxWxD).

Mfg. Part No.	Stock No.	Price Each
PB-60	33C5877	51.00

(68407)

QUICK TEST SOCKET BREADBOARDS



Patented tab/keyway feature allow unlimited expansion of boards. Vinyl back prevents shorting. Accept all components with leads up to 0.033". Conductive spring clips inside the board grabs component leads and connecting wire securely. Parts plug-in/pull out without soldering or damage. Molded-in mounting holes permit front mounting to backplate or other surfaces. 22AWG wire preferred.



QT-35B



QT-35S

Mfg. Part No.	Cent./Mount Dim.	Strip Length	Strip Width	Tie Points	Term. Clips	IC Qty.	Stock No.	Price Each
QT-59S	6.2" (157)	6.5" (165)	1.32" (34)	590	118	8	17C6981	10.00
QT-59B	6.2" (157)	6.5" (165)	0.36" (9)	100	20	N/A	17C6980	6.00
QT-47S	1.0" (25)	5.3" (135)	1.32" (34)	470	94	6	17C6979	8.00
QT-47B	5.0" (127)	5.3" (135)	0.36" (9)	80	16	N/A	17C6978	5.00
QT-35B	3.8" (97)	4.1" (104)	0.36" (9)	60	12	N/A	17C6976	4.00

(63485)

PROTO-BOARD® DESIGN WORKSTATION SERIES



- All Trainers have Removable Breadboards for Multi-User Capabilities
- Unconditional Manufacturer's Lifetime Guarantee on All Breadboarding Sockets
- 3-Year Warranty on All Parts and Labor
- New High and Low Buffered Logic Indicators
- 8-Channel Logic Monitor
- New 8-Selectable Logic Indicators
- 2 Digital Pulsers
- Auto-Experimentation Speaker



PB-505

Multiple features in one complete test instrument saves hundreds of dollars. **Mfg. Part No. PB-503C** is a portable design workstation that comes with a rugged carrying case. Removable breadboard area. Function generator with continuously variable sine, square and triangle waveforms and TTI pulses. Triple output power supply offers fixed 5VDC supply plus 2 variable outputs: ±1.3 to ±15VDC. **Mfg. Part No. PB-503** has the same features as **Mfg. Part No. PB-503C**, but in a bench design for internal lab use. **Mfg. Part No. PB-505** is a deluxe circuit design trainer for advanced/higher level analog, digital, and microprocessor circuit designs. Features a larger breadboard area, advanced function generator, built-in logic probe and BCD to-7 segment decoder display, plus special AC output. Additional breadboard socket plates are available; go online or call.

WORKSTATIONS

Mfg. Part No.	Description	Stock No.	Price Each
PB-503	Proto-Board® Workstation	17C6973	335.00
PB-503C	Proto-Board® Portable Workstation	17C6974	385.00
PB-505	Proto-Board® Deluxe Workstation	33C5876	505.00

(63487)

PROTOTYPING BREADBOARD LAB STATION



Ideal for prototyping circuit applications. **Pro-S Lab Station** includes solderless breadboard; DC power pack power supply, rated +5VDC @ 1A, +12VDC @ 250m, -12VDC @250mA; a power connector to connect power supply to breadboard; jumper wires, and 25 precut pieces of color-coded, 22AWG, insulated solid hook-up wire.



Mfg. Part No.	Stock No.	Price Each
PRO-S LAB STATION	18C5694	85.00

(63483)

POWERED BREADBOARD SYSTEMS



- Binding Posts 450 Terminals
- 2250 Tie Points
- Handle 24-Pin ICs
- Preferred Wire Size: 22 AWG



Powered boards are ideal for various prototyping circuit applications. Initial contact resistance is less than 0.5 milliohm; after multiple use this reduces to less than 0.4 milliohm. **Mfg. Part No. PB-203A** features 3 separate power supplies: 5VDC @ 1A set, +5.5 - 18VDC @ 0.5A adjustable, and -5.5 - 18VDC @ 0.5A adjustable. Voltages adjust easily with a screwdriver. **Mfg. Part No. PB-204** features 3 separate power supplies: 5VDC @ 1A, +12VDC @ 0.25A, and -12VDC @ 0.25A. Includes an external, plug-in-power jack.

Mfg. Part No.	Power Supplies	Stock No.	Price Each
PB-203A	5VDC @ 1A Set, +5.5-18VDC Adjustable, -5.5-18VDC Adjustable	17C6971	216.00
PB-204	5VDC @1A, +12VDC @ 0.25A, -12VDC @0.25A	17C6972	175.00

(63480)

POWERED BREADBOARD SYSTEMS

Just Added



Features

- Register contents display
- Dot Matrix (3 color) display
- Program download and trace function
- Memory contents modification and dump function
- LCD (Liquid Crystal Display) 16 x 2 line
- +5 V, +12 V, -12 V S.M.P.S. (Free Voltage) Power (110 V/220 V)
- Wood case

These microprocessor trainers offer excellent instruction on 8 and 16 bit systems. Each model comes with courseware and computer interface and housed in a durable wood carrying case.

Mfg. Part No.	Description	Stock No.	Price Each
GST-Z80	8-bit MCU trainer w/ experiments	10R0130	499.00
GZT-8086	16-bit MCU trainer w/ experiments	10R0131	499.00

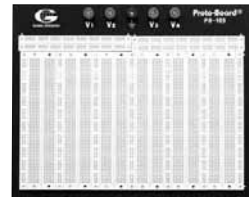
(148489)

SOLDERLESS PROTOTYPE SYSTEMS

Just Added



These assembled breadboards can be used for various prototyping circuit applications. Features QT sockets and bus strips mounted on rugged back panels. The preferred wire size for all types is 22 AWG. Initial contact resistance: <0.5 milliohm; after multiple use, this reduces to <0.4 milliohm. Height: 1.4".



PB-105

PREMIUM LINE

Mfg. Part No.	Binding Posts	IC Cap.	Terminals	Tie Pts.	Width	Stock No.	Price Each
PB-10	3	8	...	840	4.0"	17C6961	23.00
PB-103	4	24	450	2250	6.0"	17C6965	50.00
PB-104	4	32	612	3060	8.0"	17C6967	75.00
PB-105	5	48	912	4560	11.4"	17C6969	100.00

ECONOMY LINE

Mfg. Part No.	Binding Posts	IC Cap.	Terminals	Tie Pts.	Width	Stock No.	Price Each
PB-83E	3	8	...	840	4.0"	10R0133	17.00
PB-70E	3	12	...	1260	5.0"	10R0132	32.00

(63482)

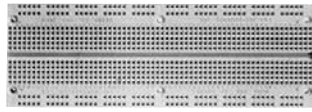
BREADBOARDS • EXTENDER CARDS • JUMPER WIRE KITS

1

EXPERIMENTOR SOLDERLESS BREADBOARDS



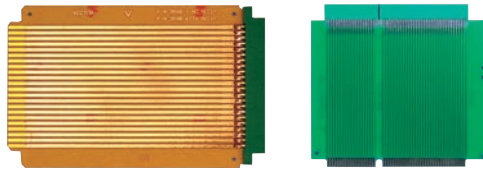
Boards feature vinyl backs that prevent shorting. Offer unlimited expansion that allows a user to combine boards. Accept all components with wire leads up to 0.033". Molded-in mounting holes permit front mounting to backplate or other surfaces. The preferred wire size is 22AWG. Mfg. Part No. **UBS-100** is 2.2" wide and **EXP-300** is 2.1" wide.



Mfg. Part No.	Cent./Mount Dim.	Strip Length	Strip Width	Tie Points	Term. Clips	IC Qty.	Stock No.	Price Each
UBS-100	0.3" (8mm)	6.5" (165mm)	2.2" (56mm)	840	168	8 (14-Pin)	17C6982	13.00
EXP-300	0.3" (8mm)	6.0" (152mm)	2.1" (53mm)	550	110	6 (14-Pin)	17C6898	9.00
EXP-350	0.3" (8mm)	3.6" (91mm)	2.1" (53mm)	270	54	3 (14-Pin)	17C6901	5.95

(63484)

3690 SERIES VECTORBORD® GENERAL PURPOSE EXTENDER CARDS



3690

3690-26

Gold-plated connector mounted on top of extender. Epoxy glass composite except (+) FR4 epoxy. Mfg. Part No. **3690-26-1** has a multilayer design for high performance applications and 12 50V decoupling capacitors.

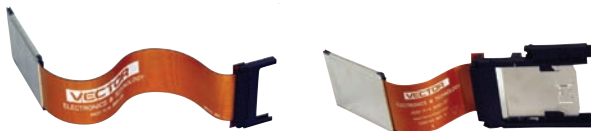
Mfg. Part No.	Fits Rack Series / Circuit Board / Bus Type	Contacts	Spacing (in.)	Stock No.	Price Each
					1-9
3690	13 Series Subracks 3662, 3662-5, 3662-9, 3677-2, 3682-2, 3682-4, 4112-4, 4112-5, 838WE	44	0.156	34F1240	43.89
3690-2	13 Series Subracks, 3719-1, 3719-6, 3719-4	72	0.1	34F1241	78.65
3690-6	13, 14 Series Subracks, 3662-2, 3682, 4112 RCA Cosmac Bus	44	0.156	34F1242	58.81
3690-12	100 Series Subracks, 8801-6, 8804-STD Bus	100	0.125	65F694	83.59
3690-16	4610 Series	56	0.125	34F1243	52.16
3690-18	IBM PC XT EXTENDER,31/62,5.7L+	31/62	0.1	44F2401	129.51
3690-22	MULTIBUS EXTENDER,30/43 CONTACTS, 12 X 7.65+	30/43	0.1	44F2201	84.50
3690-26	IBM AT Bus	36/62	0.1	46F2451	83.59
3690-26-1	Multilayer IBM AT Bus+	36/62	0.1	50F2722	249.19

(3802)

PCMCIA RIGID AND FLEXIBLE EXTENDERS



3690-35



3690-36

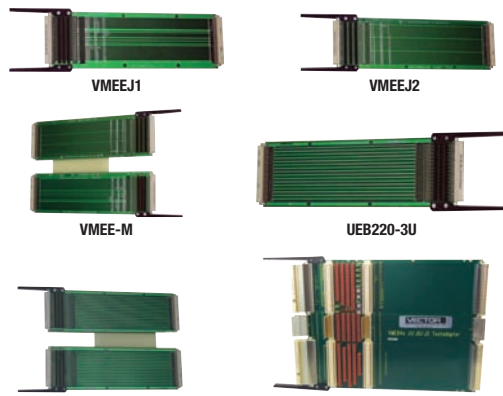
3690-38

Multilayer RIGID and FLEXIBLE extenders for Type II or Type III 68-pin PCMCIA slots have excellent signal propagation when used with CF or CFI adapter, can be used with digital cameras, modems, handhelds or I/O cards. **3690-35** rigid version has test points on all 68 signal lines and jumper connected PWR/GND. Flexible versions are a full 12.00" L. **3690-36** has standard 68-pin push/pull receptacle end and **3690-38** has push button style ejector. Both flexible versions made of high Tg (260 degreesC) Kapton polyimide that is completely flexible and will "mold" 180 degrees with a .05" radius. Custom lengths available.

Mfg. Part No.	Description	Stock No.	Price Each
			1-9
3690-35	RIGID PCMCIA Test Extender with Fixed Slot	66F9787	162.45
3690-36	FLEX PCMCIA Extender with Fixed Slot	86H3247	151.99
3690-37	PCMCIA Flexible Memory Card Extender with Fixed Slot	13J1229	189.89
3690-38	PCMCIA Flexible Memory Card Extender with Ejector Type Slot	13J1230	198.54

(3888)

VECTORBORD® METRIC EXTENDER CARDS (DIN41612)



VME J1, J2 and -M extender (assembly) are for 160mm & 220mm depths. 3-layer construction, controlled impedance design, and patented signal trace shielding minimize crosstalk. Jumpers provided for interrupting all signal lines. Mounting pads for additional DIN connector or for test point mounting of logic analyzer also included. DIN UEB series Universal Uncommitted extenders available in a wide range of sizes and feature 4-layer construction, trace shielding and controlled impedance and jumpers for signal line interrupt for each of 96-pins. VME64-M extenders feature trace shielding and controlled impedance. Mounting pads for additional DIN connector or for test point mounting of logic analyzer also included.

VME BUS EXTENDER CARDS - 96 PIN

Mfg. Part No.	Contacts	Length x Height	Panel Height	Stock No.	Price Each
					1-9
VMEEJ1	96	12.20 x 3.94" (310 x 100)	3U	46F347	291.44
VMEEJ2	96	12.20 x 3.94" (310 x 100)	3U	46F2759	291.44
VMEE-M	96	12.20 x 9.19" (310 x 233)	6U	98F7209	425.05

UNCOMMITTED BUS EXTENDER CARDS - 96 PIN

UEB220-3U	96	12.20 x 3.94" (310 x 100)	3U	91B7297	331.20
UEB220-6U	96	12.20 x 9.19" (310 x 233)	6U	88F3725	549.80
UEB220-9U	96	12.20 x 14.44" (310 x 367)	9U	09J1419	689.82
UEB400-9U	96	15.75 x 14.44" (400 x 367)	9U	09J1420	838.84
UEB500-9U	96	19.69 x 14.44" (500 x 367)	9U	09J1421	886.91

VME64x BUS EXTENDER CARDS - 160 PIN

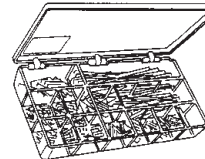
VME64-M	160	12.20 x 9.19" (310 x 233)	6U	89M4344	2880.00
---------	-----	---------------------------	----	---------	---------

ACCESSORIES

Mfg. Part No.	Description	Stock No.	Price Each
			1-9
5210210	Extender Cards	90H9867	15.42

(77999)

350-PIECE JUMPER WIRE KIT



Kit contains 25 each of 14 wire lengths, which can also be ordered separately below. PVC insulated 22 AWG solid tinned copper.

Mfg. Part No.	Description	Stock No.	Price Each
			1-9
923351-I	350-pc. jumper wire kit	65F2290	38.73

Mfg. Part No.	Insulation	Length	Pkg. of	Stock No.	Price Each
					1-4
923345-01-C	None	0.1" (2.54)	200	70C5570	12.16
923345-02-C	Red	0.2" (5.08)	200	19M8560	12.16
923345-03-C	Orange	0.3" (7.62)	200	19M8561	12.16
923345-04-C	Yellow	0.4" (10.16)	200	19M8562	12.16
923345-05-C	Green	0.5" (12.70)	200	19M8563	12.16
923345-06-C	Blue	0.6" (15.24)	150	87F4059	11.24
923345-07-C	Violet	0.7" (17.78)	150	19M8564	11.24
923345-08-C	Gray	0.8" (20.32)	150	19M8565	11.24
923345-10-C	White	0.9" (22.86)	150	19M8566	11.41
923345-10-C	Brown	1.0" (25.40)	100	19M8566	11.41
923345-20-C	Red	2.0" (50.80)	100	19M8567	11.41
923345-30-C	Orange	3.0" (76.20)	75	87F4051	11.52
923345-40-C	Yellow	4.0" (101.60)	75	87F4052	11.52
923345-50-C	Green	5.0" (127.00)	75	19M8568	11.52

(3792)

JUMPER WIRE KITS • MICROGRIPPERS™ • PROTOTYPING BOARDS

1

JUMPER WIRE KITS

Kit comes in a plastic case containing precut/prestripped/preformed 22AWG insulated solid hook-up wire, 14 color-coded lengths from 0.1-5.0".



Just Added

Mfg. Part No.	Pieces per Length	Pieces Total	Stock No.	Price Each
WK-1	25	350	17C6983	22.00
WK-2	10	140	10R0134	25.00
WK-3	5	70	10R0135	25.00

(63479)

LOW-PROFILE MICROGRIPPER™— 1.25mm TO 0.3mm LEAD PITCH



Featuring low-profile grippers. Mfg. Part Nos. FP-7C and FP-7CL conductor resistance is 2mΩ max. and FP-LA1C resistance is 40mΩ max. Includes flexible stand wires. Body height: 7mm. ABS plastic body. Rating: 500WVDC. Sold in packages of 10.



Mfg. Part No.	Description	Stock No.	Price Each	
			1-4	1-4
FP-7C-10	Short Gripper without Cord	18C0809	377.97	
FP-7CL-10	Long Gripper without Cord	18C0810	428.93	
FP-LA1C-10	Long Gripper with Cord	18C0801	186.86	

(65282)

MICROGRIPPER™— 1.25mm TO 0.2mm LEAD PITCH



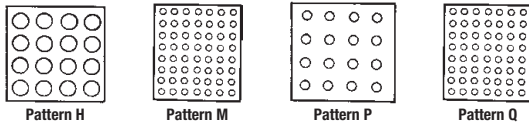
Use with SMT packages down to 0.2mm to 0.3mm lead pitch. Thin clip body width allows unlimited lead grippers to be mounted side by side for simultaneous testing. 2 gripper ranges. Bandwidth: 3db >100MHz. Rating: 500WVDC. Material: body, ABS; tips, nickel-plated steel wire or stainless steel. Sold in packages of 10, except Mfg. Part Nos. FOP-1, FOP-3 are sold as Each.



Mfg. Part No.	Description	Used With Type	Stock No.	Price Each	
				1-4	1-4
FP-2CL-10	Long Gripper with Cords	...	18C0807	407.70	
FP-2S-10	Long Gripper with Cords	FOP-1	18C0808	484.15	

(65281)

VECTORBORD® GENERAL-PURPOSE PROTOTYPING BOARDS



Vectorbord general purpose pre-punched insulating punchboard is available in standard grid patterns shown below for assembling circuit components. Standard thickness is 1/16" (0.062") except as noted. FR-4 and CEM-1 laminate materials have a maximum electrical temperature of 130°C; FR-2 phenolic is 110°C and GPY P96 HiTemp material is 260°C. Vectorbord listed below is UNCLAD or COPPER CLAD only, no pads or plated holes. For unpunched panels see pattern X at bottom of listing.

FR4 EPOXY GLASS

Mfg. Part No.	Pattern	Hole Size (mm)	Hole Centers (mm)	W x L	Stock No.	Price Each	
						1-9	1-9
59P44-032	P	1.1	2.5	4.5 x 6 x 0.032" TH	38F1385	10.91	
64P44WE	P	1.1	2.5	4.5 x 6.5"	34F1223	8.46	
84P44WE	P	1.1	2.5	4.5 x 8.5"	34F1224	13.36	
169P44WE	P	1.1	2.5	4.5 x 17"	34F1226	22.56	
169P59-032	P	1.1	2.5	6 x 17 x 0.032" TH	38F1053	22.54	
169P59-047	P	1.1	2.5	6 x 17 x 0.047" TH	38F1386	22.03	
169P79WE	P	1.1	2.5	8 x 17"	34F1227	34.91	
169P84WE	P	1.1	2.5	8.5 x 17"	34F1228	31.92	
169P99WE	P	1.1	2.5	10 x 17"	97H6167	47.09	
85H48WE	H	1.6	2.5	4.8 x 8.51"	38F408	17.79	
155H175WE	H	1.6	2.5	16 x 18"	07H9855	102.41	
170H48WE	H	1.6	2.5	4.8 x 17"	38F1070	33.37	
170H48WE-032	H	1.6	2.5	4.8 x 17 x 0.032" TH	68K0903	22.31	
85H85WE	H	1.6	2.5	8.51 x 8.51"	38F1336	29.51	
170H85WE	H	1.6	2.5	8.51 x 17"	38F1383	51.19	
126M76-032	M	0.64	1.3	4 x 6.5 x 0.032" TH	97F7956	26.41	

▶ CONTINUED ▶

VECTORBORD® GENERAL-PURPOSE PROTOTYPING BOARDS (CONT.)

Mfg. Part No.	Pattern	Hole Size (mm)	Hole Centers (mm)	W x L	Stock No.	Price Each	
						1-9	1-9
336M76-032	M	0.64	1.3	4 x 17 x 0.032" TH	87F661	24.02	
47Q78WE	Q	0.64	2	3.94 x 6.30"	91C4700	14.54	

FR4 WITH ONE SIDE COPPER CLAD

336M76-032C1	M	0.64	1.3	4 x 17 x 0.032" TH	97F7957	24.02	
169P44WEC1	P	1.1	2.5	4.5 x 17"	34F1225	22.03	
169P84WEC1	P	1.1	2.5	8.5 x 17"	34F1229	37.91	

CEM-1 EPOXY GLASS COMPOSITE WITH TWO SIDE COPPER CLAD

169P44WEC2	P	1.1	2.5	4.5 x 17"	38F1379	23.05	
------------	---	-----	-----	-----------	---------	-------	--

CEM-1 EPOXY GLASS COMPOSITE

64P44	P	1.1	2.5	4.5 x 6.5"	38F1376	8.46	
169P44	P	1.1	2.5	4.5 x 17"	38F1377	14.69	
169P79	P	1.1	2.5	8 x 17"	77B5242	38.44	
169P84	P	1.1	2.5	8.5 x 17"	38F409	32.78	
169P99	P	1.1	2.5	10 x 17"	89F659	47.09	
349P84	P	1.1	2.5	8.5 x 35"	12C0367	83.38	

CEM-1 EPOXY GLASS COMPOSITE WITH ONE SIDE COPPER CLAD

169P44C1	P	1.1	2.5	4.5 x 17"	38F1378	27.38	
169P84C1	P	1.1	2.5	8.5 x 17"	77B5243	44.56	

FR2 PHENOLIC

64P44XXP	P	1.1	2.5	4.5 x 6.5"	38F410	8.50	
169P44XXP	P	1.1	2.5	4.5 x 17"	38F411	15.70	
169P59XXP	P	1.1	2.5	6 x 17"	77B5241	17.47	

HI-TEMP GPY 260°C POLYIMIDE P96

64P44HT	P	1.1	2.5	4.5 x 6.5"	68K0904	63.35	
169P84HT	P	1.1	2.5	8.5 x 17"	26H0629	124.99	
169P84HTC2	P	1.1	2.5	8.5 x 17"	26H0630	120.18	

UNPUNCHED PANELS

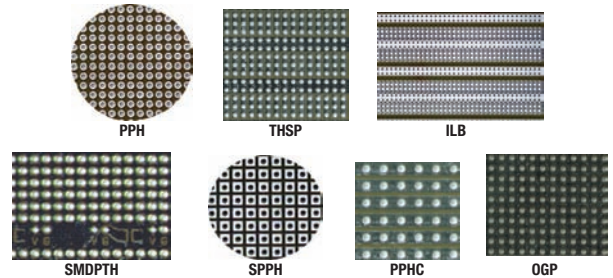
Mfg. Part No.	Pattern	W x L	Stock No.	Price Each	
				1-9	1-9
12X12WE	FR4 Epoxy Glass	12 x 12"	26H0627	14.43	
12X12WEC1	FR4 Epoxy Glass, Unplated copper 1 side	12 x 12"	26H0628	14.43	
12X12C2	CEM-1 Epoxy Glass Comp, Unplated Copper 2 Sides	12 x 12"	91C3981	21.65	
12X12C1	CEM-1 Epoxy, Glass Comp, Unplated Copper 1 Side	12 x 12"	68K0902	21.65	

ACCESSORIES AND TOOLS FOR COPPER CLAD BOARDS

Mfg. Part No.	Description	Stock No.	Price Each	
			1-9	1-9
P138A	Pad Cutter Tool w/Handle-Hole Size 0.04" (1.02) for "P" Pattern Hole	81F4742	69.60	
P138C	Pad Cutter Tool, Shank Only-Hole Size 0.04" (1.02) for "P" Pattern Hole	81F4743	83.69	

(3851)

CIRCBORD™ PRINTED CIRCUIT PROTOTYPING BOARDS



- All Bus and Circuit Patterns are Solder Coated
- FR-4 Epoxy Glass and CEM-1 Epoxy Glass Composite Material with UL 94V-0 Flame Rating
- Boards Can Be Cut to Smaller Units

Pattern	Description
ILB	Interleaved Bus
OGP	Overall Ground Plane, No Pads
OGPWP	Overall Ground Plane, Surrounds Pads
PPH	.080" Pads-Per-Hole Not Plated-Thru
PTPPH	.080" Plated-Thru Pads-Per-Hole
PTHPGP	.080" Plated-Thru-Pads-Per-Hole w/ Peripheral Ground Plane
PTHOGP	.080" Plated-Thru-Pads-Per-Hole w/Overall Ground Plane
PTHC	Plated-Thru Holes on Lengthwise Tracks, Both Sides
PPHC	Non-Plated-Thru Holes on Lengthwise Tracks, One Side
SMDPTH	V & G Planes, Plated-Thru-Holes and SMD Cap Positions
SPPH	.085" Square Pads-Per Hole and Peripheral Ground Plane
THSP	.085" Square Plated-Thru Pads-Per-Hole w/Peripheral Ground Three-Hole Pads

These 0.062" (1.57) thick printed circuit boards feature 0.042" (1.07) diameter holes on 0.100" (2.54) grid. Accepts Mfg. Part No. R32 wire wrap socket pins, ordered separately.

▶ CONTINUED ▶

PROTOTYPING BOARDS

1

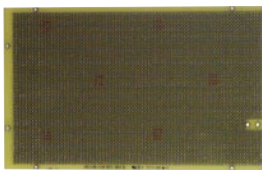
CIRCBORD™ PRINTED CIRCUIT PROTOTYPING BOARDS (CONT.)

Mfg. Part No.	Material	Circuit Pattern		W x L	16-Pin DIP Cap.	Stock No.	Price Each
		Solder Side	Component Side				
8002	CEM-1	ILB	None	4.50 x 6.50	36	38F1250	29.45
8004	CEM-1	OGP	None	4.50 x 6.50	50	44F3800	28.85
8007	CEM-1	OGP	PPH	4.50 x 6.50	60	46F1193	28.83
8022	FR-4	PPHC	None	3.00 x 3.50	0	66H7462	6.01
8029	FR-4	PPHC	PPH	2.00 x 3.00	0	24K7312	6.54
8019	FR-4	PTHC	PTHC	3.94 x 6.30	0	01H8755	22.60
106P70-4	FR-4	PTHOGP	PTHOGP	7.00 x 10.60	175	97F7953	137.75
106P180-4	FR-4	PTHOGP	PTHOGP	10.60 x 18.00	400	95F5084	164.92
8010	FR-4	PTPPH	PTPPH	4.00 x 13.00	124	94F9384	45.97
8006	FR-4	PTPPH	PTPPH	5.00 x 13.25	154	44F3801	49.10
8012	FR-4	PTPPH	PTPPH	9.20 x 11.00	283	94F9386	66.88
8013	FR-4	PTPPH	PTPPH	10.60 x 18.00	165	91B0472	112.47
8015	FR-4	PTPPH	PTPPH	4.00 x 6.00	72	94C4169	12.03
8015-1	FR-4	PTPPH	None	4.00 x 4.00	72	01H8753	7.66
8016	FR-4	PTPPH	PTPPH	6.00 x 9.00	165	01H8754	20.33
8016-1	FR-4	PTPPH	None	6.00 x 6.00	140	94C4031	11.06
106P106-1	FR-4	PTPPH	PTPPH	10.60 x 10.60	275	81F5768	64.38
8008	FR-4	SMDPTH	SMDPTH	4.50 x 6.50	70	94F9382	35.53
8003	CEM-1	SPPH	None	4.50 x 6.50	60	44F3799	26.41
45P80-1	CEM-1	SPPH	SPPH	4.50 x 8.08	80	81F5767	27.55
45P80-2	CEM-1	SPTH	SPTH	4.50 x 8.08	80	69H6774	27.55
8001	CEM-1	THSP	None	4.50 x 6.50	20	38F1249	24.02
8023	FR-4	THSP	THSP	4.50 x 6.50	20	24K7311	21.85
3677-6	CEM-1	THSP	None	4.50 x 8.08	21	87F660	23.01

0.25" (1.07) DIAMETER HOLES ON 0.050" GRID

Mfg. Part No.	Material	Circuit Pattern	Component Side	W x L	16-Pin DIP Cap.	Stock No.	Price Each
8021	FR-4	PTPPH	PTPPH	3.94 x 6.30	0	66H7461	35.53

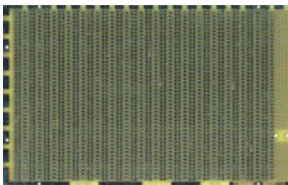
1MM & 2MM PITCH EUROCARD GRID DEVELOPMENT BOARDS



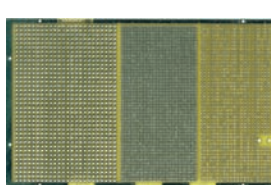
8017



8020



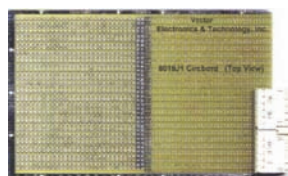
8024



8028



8017J1



8018J1

1MM (Hard Metric):

- "S" pattern for ALL METRIC component lead spacing
- 3U X 160mm (3.94" X 6.3") Eurocard size
- Mfg. Part No. 8020J1 has 2mm HM press-fit female J1 connector installed
- Isolated copper pads only, No solder plating

Mfg. Part No.	Description	Size (mm x mm)	Stock No.	Price Each
8020	Pad-Per-Hole, Plated Thru, No Solder	100 x 160	01H8756	35.53
8020J1	Pad-Per-Hole, Plated Thru, No Solder, with J1 connector	100 x 160	01J1559	46.55

2MM (Hard Metric):

- "Q" pattern for 2mm component lead spacing
- 3U X 160mm (3.94" X 6.3") Eurocard size
- Mfg. Part No. 8018 combines 0.100" and 2mm grid ("Q" & "P" patterns)
- "J1" suffix has 2mm hard metric female connector installed
- Isolated copper pads with solder plating

➤ CONTINUED ➤

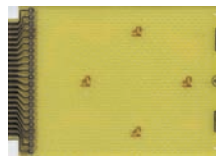
1MM & 2MM PITCH EUROCARD GRID DEVELOPMENT BOARDS (CONT.)

- Peripheral ground planes
- Legends to identify hole locations on all metric boards
- All constructed of 1/8" (0.062) FR-4, UL 94V-0

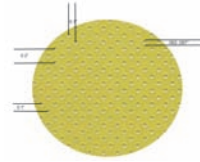
Mfg. Part No.	Description	Size (mm)	Stock No.	Price Each
8017	Pad-Per-Hole, Plated Thru, Solder Plating	100 x 160	92C2684	18.30
8017J1	Pad-Per-Hole, Plated Thru, Solder Plating, with J1 connector	100 x 160	99H8995	30.04
8018	Pad-Per-Hole, 2mm & 0.100" Grid Combo	100 x 160	73C1943	21.00
8018J1	Grid Combo, with J1 Connector	100 x 160	01J1558	34.85
8024	2mm x 2mm grid dev. Board with 3-hole solder pads	100 x 160	20J3132	21.04
8028	Pad-Per-Hole Combo with 0.100", 0.050" and 2 mm grid	100 x 160	16J0508	21.04

(73439)

ALTERNATE 0.1" GRID FOR TRANSISTOR MOUNTING WITH 44 GOLD-PLATED CONTACTS



838WE



85G42WE Hole pattern

- 0.063" (1.60mm) Diameter Holes on Alternate Intersections of 0.1" (2.54mm) Grid.

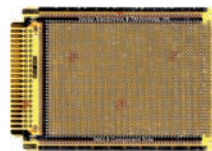
Mfg. part no. 838WE has edge card contacts only for Vector R644 series edge connectors; FR-4 epoxy glass construction. 44 Gold-tin alloy plated edge contacts, 22 per side on 0.156" centers. Board size: 4.5" x 6.5".

Mfg. Part No.	Contacts		Mating Connector		Mating Extender	Stock No.	Price Each
	No.	Spacing	Solder Eye	Wrap Tail			
838WE	22/22	0.156"	R644	R644-3	3690	38F1080	24.02

Mfg. Part No.	Description	Stock No.	Price Each
85G42WE	VECTORBORD® G Pattern Board (No Contacts, 8.5" x 17", FR-4)	38F1051	43.69

(3855)

PLUGBORD™ PROTOTYPING BOARDS, 0.063" THICK FOR EDGE CONNECTORS



3662-9



3719-4

- Designed for VectorPak® EIA RS310 Subracks (Series CCK or CCA 13,14)
- All Bus and Circuit Patterns are Solder Coated
- Gold-plated Edge Contact "Fingers" for R600-series Edge Connectors on Both Sides
- FR-4 Epoxy Glass and CEM-1 Epoxy Glass Composite Material with UL 94V-0 Flame Rating
- Vector Plugboards™ Listed Here All Have .042" Dia. Holes

Circuit Pattern	Description
ILB	Interleaved Bus
OGP	Overall Ground Plane, No Pads
PTPPH	Pad-Per-Hole, Holes Plated-Thru
PTHPGP	Pad-Per-Hole, Holes Plated-Thru- w/ Peripheral Ground Plane
PPHC	Lengthwise Tracks Only
THSP	Three-Hole Pads

30 CONTACTS, R630 SOLDER CONNECTOR*

Mfg. Part No.	Circuit Pattern		W x L	Stock No.	Price Each
	Solder Side	Component Side			
3797	None	None	2.73" x 4.5"	77B5275	16.98
3797-2	THSP	None	2.73" x 4.5"	38F1100	21.65

➤ CONTINUED ➤

PLUGBORD™ PROTOTYPING BOARDS, 0.063" THICK FOR EDGE CONNECTORS (CONT.)

44 CONTACTS, R644 SOLDER CONNECTOR, R64-3 WIRE-WRAP CONNECTOR*

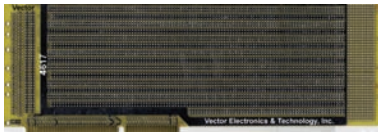
Mfg. Part No.	Circuit Pattern		W x L	Stock No.	Price Each
	Solder Side	Component Side			
● 3662-5	None	None	4.5" x 4.5"	38F1134	24.02
● 3662	None	None	4.5" x 6.5"	38F1366	26.98
● 3662-2	None	None	4.5" x 9.6"	38F1105	34.85
3662A6	OGP/PB	None	4.5" x 6.5"	77B5255	43.27
3662-9	PTHGPG	PTHGPG	4.5" x 6.5"	81F4779	43.27
3677	THSP	None	4.5" x 9.6"	38F1367	34.85
3677-2	THSP	None	4.5" x 6.5"	38F1368	28.85
3795-1	THSP	None	2.73 x 4.5"	38F1099	24.02
3682	ILB	None	4.5" x 9.6"	38F1369	46.03
3682-2	ILB	None	4.5" x 6.5"	38F1370	31.34
3682-4	ILB	OGP	4.5" x 6.5"	38F1371	53.15
4112	ZZ	OGP	4.5" x 9.6"	77B5279	39.70
4112-4	ZZ	OGP	4.5" x 6.5"	38F1138	32.29
4112-5	ZZ	OGP	4.5" x 4.5"	38F1137	29.26

72 CONTACTS, R636-2 SOLDER CONNECTOR, R636-1 WIRE-WRAP CONNECTOR*

● 3719-1	None	None	4.5" x 6.5"	38F1103	26.59
● 3719-4	None	None	4.5" x 9.6"	38F1104	36.03
3719-6	PTHGPG	PTHGPG	4.5" x 6.5"	81F4780	45.98
4066-4	OGP	ILB	4.5" x 6.5"	38F1131	28.78

*Order connectors separately in our Interconnect section (78909)

4617 SERIES CIRCUIT BOARDS FOR IBM® AT, PC AND XT COMPUTERS



4617

4613 and 4617 series boards plug into any IBM® AT slot with dual connectors; have pads to mount dual row 0.1" (2.54) spaced header. All boards listed below are 0.063" (1.60) thick epoxy glass per MIL-P-13949 type GF. Feature marked edge identification, with gold-plated contacts on 0.1" (2.54) centers. Power and ground buses terminate to connectors, and pads on board and bracket accept DB9-, 15-, 25- or 37-pin I/O connector. Holes are 0.042" (1.07) diameter on 0.1" (2.54) grid. Use solder or wire-wrap press-in terminals. Universal mounting bracket, card guide, layout planing sheets included. 4613 and 4617 Series uses Mfg. Part Nos. 3690-26 or 3690-26-1 extender card, ordered separately on page 366.

BOARDS WITH 3-HOLE SOLDER PADS/BUSES

Mfg. Part No.	Fits IBM® Model	16-Pin DIP Capacity	Stock No.	Price Each
				1-9
4617	AT, ISA	39	46F2448	81.50

PERIPHERAL BUSES

These boards feature voltage and ground bus lines that trace a path around the board perimeter. Boards are filled on 0.1" (2.54) grid. Bus surfaces are solder-coated for convenience.

Mfg. Part No.	Fits IBM® Model	16-Pin DIP Capacity	Stock No.	Price Each
				1-9
4613-1	PC, XT	93	81F4777	54.33
4617-1	AT, ISA	108	46F2449	61.26

PAD-PER-HOLE

These boards with plated-thru holes feature pads on a 0.1" (2.54) grid which allow unlimited component placement. Full size. They accept any width DIP device, and have power and ground buses on each around the edges.

Mfg. Part No.	Fits IBM® Model	16-Pin DIP Capacity	Stock No.	Price Each
				1-9
4613-3	PC, XT	154	44F2202	62.48
4617-3†	AT, ISA	96	46F2450	82.98

†Only uses type 3690-26

VOLTAGE/GROUND PLANES

These boards are for higher frequency construction, features solid voltage and ground planes on opposite sides. Boards are filled with 0.55" (1.40) diameter holes spaced 0.1" x 0.1" (2.54 x 2.54), with etched clearance areas surrounding them. Connections from device leads to voltage or ground made by direct soldering or placing eyelet in hole, and soldering flange to tinned circuit plane. Component leads soldered into eyelets are connected to circuit side on which eyelet flange is soldered.

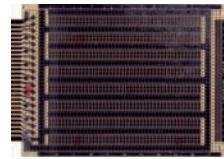
Mfg. Part No.	Fits IBM® Model	Holds 16-Pin DIPs	Stock No.	Price Each
				1-9
4617-4	AT, ISA	140	87F1076	82.98
4617-5	AT	140	27B9463	109.22

ACCESSORIES

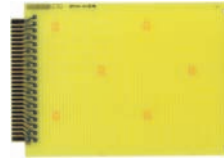
Mfg. Part No.	Description	Stock No.	Price Each
			1-9
HD36B	4617 Series IBM Bracket and Hardware Kit	87F1072	26.17

(3849)

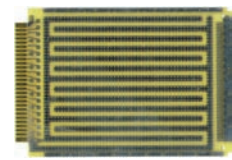
STD BUS AND S-100 CIRCUIT BOARDS



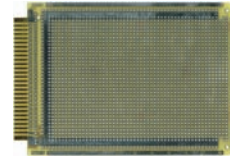
4610



4610-1



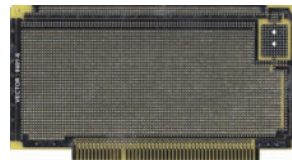
4610-2



4610-3



8801-1



8801-6



8804

4610 series, 8801-1 and 8804 all have 0.42" (1.07MM) diameter precision drilled holes on 0.1" (2.54MM) grid, 0.062" thick 94-V0 material. STD-Bus standard: 5V bus terminates to pins 1 and 2, ground terminated to pins 3 and 4. \$100 per IEEE 696. All accept 3690-16 extender cards, R600-series edge connectors and R32 Socket Pins, ordered separately. Order card racks separately; go online or call.

Pattern	Description
PTPPH	.080" Plated-Thru Pads-Per-Hole
THSP	Three-Hole Pads
ILB	Interleaved Bus
SPPH	.085" Square Pads-Per Hole and Peripheral Ground Plane

W x L: 4.5" x 6.5"

Mfg. Part No.	Material	Bus	Circuit Pattern		No. of Contacts	Centers	Stock No.	Price Each
			Solder Side	Component Side				1-9
4610	CEM-1	STD	None	THSP	56	2.5	10F8207	33.25
4610-1	CEM-1	STD	None	None	56	2.5	10F8209	31.35
4610-2	CEM-1	STD	ILB	None	56	2.5	10F8208	43.55
4610-3	FR-4	STD	PTPPH	PTPPH	25	2.5	81F4774	45.98

W x L: 5.6" x 10.0"

8801-1	CEM-1	\$100	None	None	100	3.2	65F691	52.24
8801-6	FR-4	\$100	SPPH	SPPH	15	3.2	81F4769	52.24
8804	CEM-1	\$100	SPPH	SPPH	100	3.2	65F693	62.69

(6663)



eInvoices

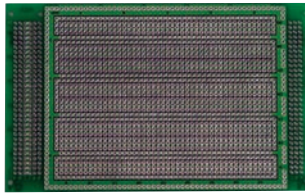
Now you can view, print or email Newark invoices from our website under MY ACCOUNT eSuite. Log in or register today.

Make it easy. Make it fast. Make it Newark.

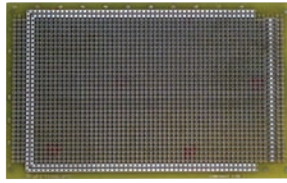
(148829)

PROTOTYPING BOARDS

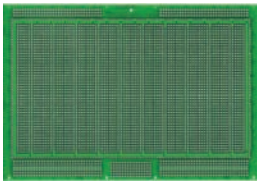
CIRCBORD™ EUROCARD PROTOTYPING BOARDS, 0.062" THICK FOR DIN 41612 96-PIN CONNECTORS, VME



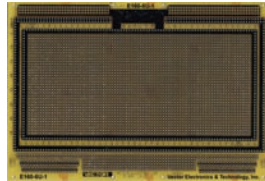
4614



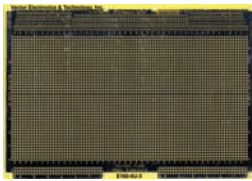
4614-3



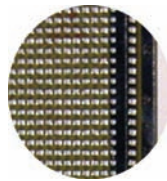
4615



E160-6U-1



E160-6U-3



E220-6U-2

- All Bus and Circuit Patterns are Solder Coated
- FR-4 Epoxy Glass and CEM-1 Epoxy Glass Composite Material with UL 94V-0 Flame Rating
- Boards Can Be Cut to Smaller Units
- Available in DIN sizes **3U** (3.94"), **6U** (9.19") and **9U** (14.44")

Signal pattern Eurocards have a bus connector, I/O, and signal pattern area. Bus connector area accepts 96-pin DIN wire-wrap connectors that allow direct connection to power and ground busses by wiring or using specially designed eyelets (T123/500 Eyelets for .055" hole boards will simulate .042" plated hole). I/O area provided for mounting D-sub and flat ribbon cable connectors. Eurocards may be used as 96-pin VME or Multibus II. 0.1" x 0.1" grid hole pattern allows non-restrictive placement of components. Boards are .062" thick (1.57mm). Holes on .100" (2.54mm) Grid. Accepts mfg. part no. R32 wire-wrap socket pins and mfg. part no. T123/500 Eyelets ordered separately.

Pattern	Description
ILB	Intervaeued Bus
OGP	Overall Ground Plane, No Pads
OGPWP	Overall Ground Plane, Surrounds Pads
PB	Peripheral Busses Only, No Pads
PPH	Pads-Per-Hole, Holes Not Plated-Thru
PTPPH	Pads-Per-Hole, Holes Plated-Thru
PTHPPG	Pad-Per-Hole, Holes Plated-Thru- w/ Peripheral Ground Plane
PTHOGP	Pad-Per-Hole, Holes Plated-Thru- w/ Overall Ground Plane
PTHC	Plated-Thru Holes on Lengthwise Tracks, Both Sides
PPHC	Lengthwise Tracks Only
SMDPTH	V & G Planes, Plated-Thru-Holes and SMD Cap Positions
SPPH	Square Pad-Per-Hole and Peripheral Ground Plane
SPTH	Square Pad-Per-Hole, Holes Plated-Thru w/ Peripheral Ground
THSP	Three-Hole Pads

Mfg. Part No.	Hole Diam.	Circuit Pattern		W x L	16-DIP Capacity	Stock No.	Price Each	
		Solder Side	Component Side				1-9	9-1
4614	0.042"	EUROCARD	THSP	3.94" x 6.3"	20	46F365	34.19	
4614-3	0.042"	EUROCARD	PTHPPG	3.94" x 6.3"	30	46F367	33.43	
4614-4	0.055"	EUROCARD	PTHPPG	3.94" x 6.3"	20	97H9197	27.16	
4615	0.042"	EUROCARD	THSP	9.19" x 6.3"	50	46F368	37.61	
E160-3U-1	0.042"	EUROCARD	PTHPPG	3.94" x 6.3"	35	46F2751	21.61	
E160-3U-3	0.055"	EUROCARD	OGP	3.94" x 6.3"	45	46F2739	31.22	
E160-6U-3	0.055"	EUROCARD	OGP	9.19" x 6.3"	105	46F2742	33.63	
E160-6U-1	0.042"	EUROCARD	PTHPPG	9.19" x 8.66"	100	46F2740	38.44	
E220-6U-2	0.042"	PB	PB	9.19" x 8.66"	140	46F2744	52.86	
E220-6U-3	0.055"	EUROCARD	OGP	9.19" x 8.66"	168	46F2745	34.85	
E280-9U-3	0.055"	EUROCARD	OGP	14.44" x 11.02"	348	87F1064	79.29	

ACCESSORIES

Standard Type 1 and Type 5 front panels constructed of 0.100" thick brushed 6061-T6 aluminum.

Mfg. Part No.	Description	Stock No.	Price Each	
			1-9	9-1
● HA9/4	Rotator Ejector w/ Hardware - Set of 4	77B5478	11.52	
● FP04-3U	DIN/VME 3UX4HP Front Panel & Type 5 Fixed Handle, 5.12" x 0.794"	94F9333	25.88	
● FP08-3U	DIN/VME 3UX8HP Front Panel & Type 5 Fixed Handle, 5.12" x 1.588"	94F9364	28.39	
● FP04-6U	DIN/VME 6UX4HP Front Panel & Type 5 Fixed Handle, 10.31" x 0.794"	94F9334	28.39	

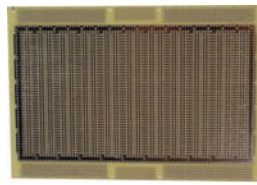
➤ CONTINUED ➤

CIRCBORD™ EUROCARD PROTOTYPING BOARDS, 0.062" THICK FOR DIN 41612 96-PIN CONNECTORS, VME (CONT.)

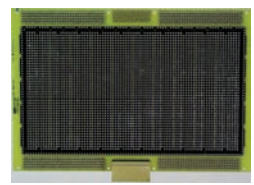
Mfg. Part No.	Description	Stock No.	Price Each
● FP08-6U	DIN/VME 6UX8HP Front Panel & Type 5 Fixed Handle, 10.31" x 1.588"	27B9441	39.70
● CM08	DIN/VME Type 5 Handles, Brackets & Hardware Only, 8HP	68K1478	16.36
● CM04	DIN/VME Type 5 Handles, Brackets & Hardware Only, 4HP	98H5612	15.53
● CM05	Card mounting 'L' brackets & Hardware Only	98H5613	4.36
● FPE04-3U	DIN/VME 3UX4HP Front Panel & Type 1 Ejector Handle, 5.12" x 0.794"	90H9851	32.46
● FPE08-3U	DIN/VME 3UX8HP Front Panel & Type 1 Ejector Handle, 5.12" x 1.588"	90H9852	34.85
● FPE04-6U	DIN/VME 6UX4HP Front Panel & Type 1 Ejector Handle, 10.31" x 0.794"	91B8129	29.04
● FPE08-6U	DIN/VME 6UX8HP Front Panel & Type 1 Ejector Handle, 10.31" x 1.588"	90B3556	35.57

(3852)

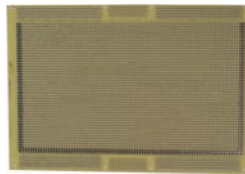
CIRCBORD™ EUROCARD PROTOTYPING BOARDS, 0.063" THICK FOR 160-PIN DIN CONNECTORS



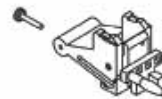
4616



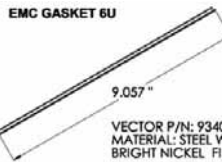
4616J0 w-conn



4616-1



90100016

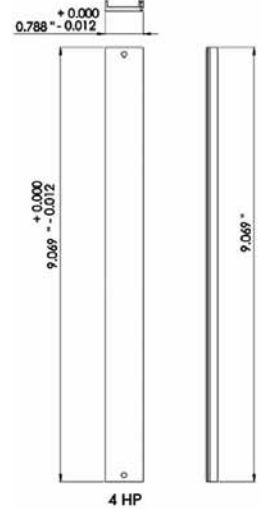


EMC GASKET 6U

93400015-6

VECTOR P/N: 93400015-6 MATERIAL: STEEL WITH BRIGHT NICKEL FINISH

93400015-6 EMC Gasket



6U 1101.10 Front Panels 4HP

- All Bus and Circuit Patterns are Solder Coated
- FR-4 Epoxy Glass and CEM-1 Epoxy Glass Composite Material with UL 94V-0 Flame Rating
- BASED ON VME64x STANDARD
- Available in DIN size 6U X 160mm (9.19" x 6.3")

Pattern	Description
PTHPPG	Pad-Per-Hole, Holes Plated-Thru- w/ Peripheral Ground Plane
THSP	Three-Hole Pads

Signal pattern Eurocards have a bus connector, I/O, and signal pattern area. Bus connector area accepts 160-pin DIN connectors. 0.1" X 0.1" grid hole pattern allows non-restrictive placement of components. Boards are .062" thick (1.57mm). Holes on .100" (2.54mm) Grid. Accepts type R32 wire-wrap socket pins.

Mfg. Part No.	Hole Diam. (mm)	Circuit Pattern		Dimensions (H x W)	DIP Capacity	Stock No.	Price Each
		Solder Side	Component Side				
4616	1.1	THSP	THSP	9.19 x 6.3"	50	68K1377	41.17
4616-1	1.1	PTHPPG	PTHPPG	9.19 x 6.3"	100	68K1378	34.93

Mfg. Part No.	Description	Stock No.	Price Each
4616J0	4616 board described above but with J0 connector installed	68K1380	64.57
4616-1J0	4616-1 board described above with J0 connector installed	68K1379	54.52

➤ CONTINUED ➤

PROTOTYPING BOARDS • PROTOTYPING BOARD ACCESSORIES

CIRCBORD™ EUROCARD PROTOTYPING BOARDS, 0.063" THICK FOR 160-PIN DIN CONNECTORS (CONT.)

ACCESSORIES

Mfg. Part No.	Description	Stock No.	Price Each	
			1-9	10-99
● RE160MSR	160-Pin, right angled, male, solder connector, J1/J2 (for above)	68K1376	21.51	
● RE160FSP	160-Pin, short-tailed, female, solder connector, press-fit, J1 (for above)	68K1374	29.87	
● RE160FWP	160-Pin, wire-wrap, female, solder connector, press-fit, J2 (for above)	68K1375	45.43	
● FP10B4HP-1	EMC Front Panel Assembly for 6U Cards, Single Slot, 0.80"w	73C8238	17.95	
● FP10B8HP-1	EMC Front Panel Assembly for 6U Cards, Double Slot, 1.6"w	98H8249	20.93	
● FP10B12HP-1	EMC Front Panel Assembly for 6U Cards, Triple Slot, 2.4"w	43J1208	26.30	
● 90100016	Type V EJECTOR/INJECTOR Handles, top/bottom, for EMC front panels	70C4087	23.90	
● 93400015-6	EMC replacement gasket only for 6U front panel	31K6153	9.93	
● 93400015-3	EMC replacement gasket only for 3U front panel	68K1381	4.98	

(85837)

FREE-STANDING CONNECTOR MOUNTED CARD GUIDE



Secure connection and rugged support of 0.062" thick free-standing circuit boards for applications where space is at a premium. Several styles available for Vector R600 edge connectors. Mounting hardware included. Sold in packages of 2

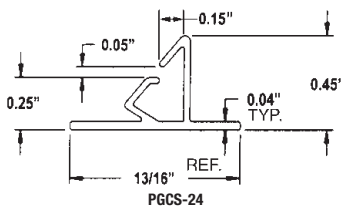


BR27D with Vector 3662-9 Plugboard with R644 Edge Connector and TS169 "T"-Strut

Mfg. Part No.	Fits Connector/Circuit Board	Stock No.	Price Each	
			1-9	10-99
● BR27D	R644, R644-1, 3662, 3677, 3682	81F4766	10.15	
● BR27-1	Connectors R644-2, R644-3C, R644-3F	81F4767	10.40	
● BR27-5	R656-1, R656-2	96B4496	10.64	
● BR27-3	R630	97B3993	11.56	

(7122)

PC BOARD MOUNTING STRIPS



Horizontal mount for PC boards of any length or width. One-piece PVC construction. Color: black. Sold in packages of ten 2' lengths.

Mfg. Part No.	Base Width	Stock No.	Price Per Package	
			1-4	5-9
● PGCS-24	0.813" (20.65)	81N1700	68.84	57.79

(9218)

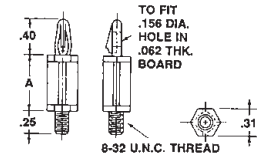


eQuotes

Retrieve and process Newark quotes online from our website under MY ACCOUNT eSuite. Log in or register today.

(148833)

STUDED PC BOARD SUPPORTS

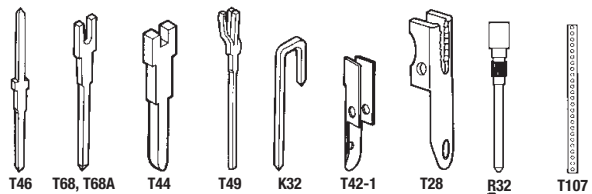


Studded supports for screw fastening. Reusable 1-piece PC board support with a #8-32 thread for speedy installation. Material: nylon. Color: natural. Require no tools. Order Mfg. Part No. NH-0832-007-SN mounting nut separately online or call. Sold in packages of 100.

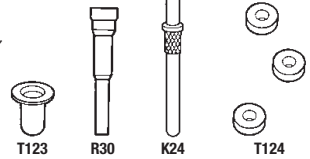
Mfg. Part No.	Dimension A	Stock No.	Price Each	
			1-4	5-9
● TPCS-4	0.25" (6.35)	81N1671	29.50	24.92
● TPCS-8	0.50" (12.70)	81N1673	30.46	25.73
● TPCS-10	0.62" (15.88)	81N1674	32.15	27.16
● 2624	0.75" (19.05)	92N4839	40.20	33.96
● 2625	0.87" (22.23)	92N4840	42.44	35.86
● 2626	1.00" (25.40)	92N4841	43.67	36.89

(9429)

CIRCUIT BOARD ACCESSORIES



- Wiring Terminals for Wire Wrap, Solder, Socket Pin or Hybrid Connection Methods
- All Wire Wrap Pins Use Standard 0.025" Square Posts
- Wire Wrap Socket Pins Accept Up to 24AWG or 0.022" Diameter Wire
- Versatile Pins for Hybrid Wire Wrap and Solder or Crimped Connections
- Pins Allow Discrete Component Mounting on Two Sides of Vectorbord®
- Phosphor Bronze; Tin Plated, Unless Otherwise Stated



Terminals and pins sold in packages of 100 and 1000.

INBOARD SOLDER POINT PINS

Description	Length (in.)	Package of 100			Package of 1000		
		Mfg. Part No.	Stock No.	Price Each	Mfg. Part No.	Stock No.	Price Each
Gold Plated Pins For 0.042" Dia. Hole	0.65	● K24A/M	38F1087	121.44
Pins For 0.042" Dia. Hole	0.65	● K24C/M	38F401	72.85
Pins For 0.042" Dia. Hole	0.55	● K30C/M	77B5524	65.55
Pins For 0.042" Dia. Hole	0.375	● K31C/M	77B5526	51.02
Pins For 0.025" Dia. Hole	0.705	● K36C/M	99F6644	63.13

LOW PROFILE WIREWRAP IC SOCKET PINS

Pins For 0.055" Dia. Hole	0.29	● R30/C	87F3868	22.03	● R30/M	77B5592	157.94
Pins For 0.055" Dia. Hole	0.703	● R31/C	77B5594	36.81	● R31/M	77B5595	355.20
Pins For 0.042" Dia. Hole	0.746	● R32/C	38F1040	45.59	● R32/M	38F1039	343.68
Pins For 0.055" Dia. Hole	0.7	● R52/C	94F9343	21.83	● R52/M	96F5458	206.71

PRESS-IN WIRE WRAP PINS

WW Post on 2 Ends	0.78	● T46-2-9/M	38F403	105.16
WW Post on 2 Ends	1.06	● T46-3-9/C	38F1242	18.05	● T46-3-9/M	38F1243	124.84
WW Post on 1 End	0.46	● T46-4-9/C	38F1245	11.35	● T46-4-9/M	38F1246	114.61
WW Post on 2 Ends	0.88	● T46-5-9/C	87F649	13.10	● T46-5-9/M	38F1248	121.44

▶ CONTINUED ▶

PROTOTYPING BOARD ACCESSORIES • SMD REMOVAL KITS

1

CIRCUIT BOARD ACCESSORIES (CONT.)

PUSH-IN WIRE WRAP TERMINALS AND J-PINS

Description	Length (in.)	Package of 100			Package of 1000		
		Mfg. Part No.	Stock No.	Price Each 1-9	Mfg. Part No.	Stock No.	Price Each 1-9
Terminals For 0.062" Dia. Hole	0.437	T28/C	38F465	11.92	T28/M	38F1061	64.21
Terminals For 0.042" Dia. Hole	0.17	T42-1/C	38F1363	11.59	T42-1/M	38F1328	56.20
J-Pin, use w/28 & T42 Series	0.65	K32/C	38F1362	19.42	K32/M	38F1326	170.00

WIRE WRAP POST WITH BIFFURCATED SOLDER TERMINAL

WW Post w/ Solder Terminal	0.69	T44/C	38F1364	12.54	T44/M	38F1329	66.22
Gold WW Post w/ Solder Terminal	0.69	T44-1/C	34F1219	15.58
WW Post w/ Solder Terminal	0.8	T68/C	34F1215	11.63	T68/M	34F1216	69.28
Gold WW Post w/ Solder Terminal	0.8	T68-1/M	12C2330	220.32
Gold WW Post w/ Solder Terminal	0.63	T68A/M	34F1218	129.39

WIRE WRAP POST WITH TRIFURCATED SOLDER TERMINAL

WW Post w/ Solder Terminal	0.73	T49/C	38F1330	17.47	T49/M	38F1331	155.77
----------------------------	------	-------	---------	-------	-------	---------	--------

ADDITIONAL PCB ACCESSORIES

Mfg. Part No.	Description	Stock No.	Price Each 1-9
T107/C	Bus Strips w/ 0.042" Holes on 0.1" Center, Pkg. of 100	50F2551	118.26
T107/10	Bus Strips w/ 0.042" Holes on 0.1" Center, Pkg. of 10	90H9856	12.12
T120-1/50	Wire Leaded	90H9857	157.89
T123/500	Eyelets for Reducing 0.055" Holes to 0.042"	87F1081	36.03
T124/M	Solder Washer Kit w/ Three Sizes	94F9373	192.70

INSERTION TOOLS

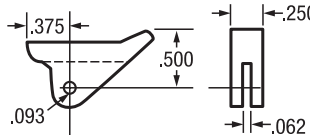
Mfg. Part No.	Description	Stock No.	Price Each 1-9
A13	Hand Insertion Tool for Series T44, T68	34F1211	29.25
A13-1	Hand Insertion Tool for Series T44, T68	34F1212	31.07
P149A	Hand Insertion Tool for Series T42	38F1339	43.70
P156	Hand Insertion Tool for Series T49	38F1340	86.51
P133A	Hand Insertion Tool for Series K24, K30, K31, K36, T46	38F1342	81.72
P91A	Hand Insertion Tool for Series T28	38F1338	94.68
P158	Hand Insertion Tool for Series R30, R31, R32, R52, T15.23	38F1380	139.59
D1	Die set for T15.23 Series Eyelets	70B3652	44.66
D10	Die Set for R30, R31 Series	27B9433	30.49
D7-2	Die Set for K24, K26, K30, K31, T46-2, T46-5 Series	38F407	93.24
D9	Die Set for R32 Series	38F1382	77.09

(8949)

ROTATION-TYPE EJECTOR HANDLES



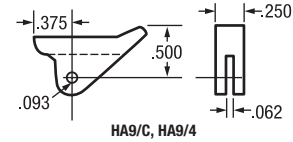
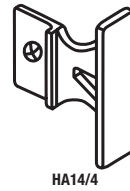
- Card Ejector, Corner Mounting
- Supports Up to 40 Lbs. Extraction Force
- White Nylon
- Hardware Included



Mfg. Part No.	Quantity per Pkg.	Stock No.	Price Each
			1-9
HA9/4	4	77B5478	11.52
HA9/C	100	89F660	131.39

(74259)

CARD RACK ACCESSORIES (EIA)



EIA RACK ACCESSORIES

Mfg. Part No.	Description	Qty	Stock No.	Price Each 1-9
SC4-27/25	4-40 x 1/4"L Screw .200" Dia. Head	25	77B5666	6.73
NT4-7PA	4-40 Nut with .180" Sq Head for T-STRUT	25	89F661	7.47
HA9/4	Front Mounted Rotation-Type Card Ejector Handle	4	77B5478	11.52
HA9/C	Front Mounted Rotation-Type Card Ejector Handle	100	89F660	131.39
HA14/4	Front Mounted Pull-Type Card Ejector Handle	4	74C1063	9.58
BR16A	Bracket Kit Includes Right/Left Brackets and Hardware	1	92B3147	12.16
TS169	T-Strut Aluminum Mounting Rail, 1"(W) x 16.850"(L)	1	81F9332	8.92
TS169-6/90	T-Strut Aluminum Mounting Rail w/Depressions for Snap-In Guides	1	92F7653	18.64
TS209	T-strut Aluminum mounting rail, 1" (W) x 20.85" (L)	1	40C2701	9.31

(78004)

CHIP QUIK® SMD REMOVAL KIT AND ACCESSORIES



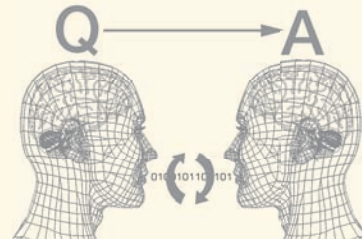
Mfg. Part No. CQ123E Chip Quik® SMD removal kit is designed to assist engineers in removing surface mount devices without expensive rework equipment. Removes QFPs, PLCCs, SOICs, and other SMD chip components. Prevents damage to PC boards. Complete removal in 4 easy steps. Includes low-residue flux and desolder/alloy. Mfg. Part No. CQ291E no-clean flux syringe, and Mfg. Part No. P/N-100 vacuum pen with 3 different tip sizes make removing soldered down ICs safe and easy; order separately below.

Mfg. Part No.	Description	Stock No.	Price Each 1-4
CQ123E	SMD Removal Kit	18C0786	24.87
CQ08E	4' Alloy, 6.5" Lengths	18C0785	69.11
CQ291E	No-Clean Flux Syringe, 10cc	18C0788	33.16
P/N-100	Vacuum Pen with 3 Tips	18C0821	131.95

(65283)

Expert technical support

Chat online to our team of engineers, or connect to them through your representative.



Make it easy. Make it fast. Make it Newark.

(148839)

PLCC, DIP AND SOIC TEST CLIPS

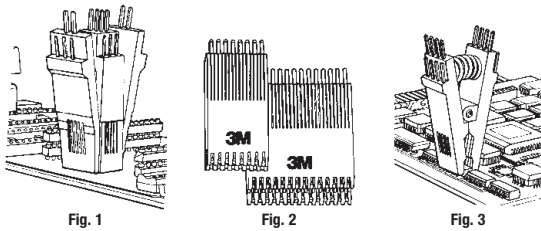


Fig. 1 Fig. 2 Fig. 3

PLCC SURFACE MOUNT TEST CLIPS—FIG. 1

Wedge design provides faster, easier attachment to plastic leaded chip carrier (PLCC). Helical compression spring and insulated contact combs assure integrity in contact when testing. Narrow body design allows component testing of devices with 0.050" (1.27) center-to-center lead spacing. Side stackable at 0.200" (5.08) row-to-row spacing between devices. 0.025" (0.635) square contact pins on 0.100" (2.54) centers.

ALLOY PLCC TEST CLIPS

Mfg. Part No.	Pins	Stock No.	Price Each
923670-20	20	46F2102	1-9 37.03

ALLOY DIP TEST CLIPS—FIG. 2

Stock No.	Mfg. Part No.	Connector Compatible		Pins	Dim.	Price Each
		Stock No.	Mfg. Part No.			1-9
65F126	923695	65F2301	923690-08	8	0.3"	11.98
65F127	923698	65F2302	923690-14	14	0.3"	12.29
65F128	923700	65F2303	923690-16	16	0.3"	12.41
65F130	923703	65F2305	923690-18	18	0.3"	17.13
65F131	923704	65F2306	923690-20	20	0.3"	17.93
...	...	95F7324	923689-24	24	0.3"	23.19
65F133	923714	65F2308	923690-24	24	0.6"	19.78
87F4069	923717	87F6087	923689-28	28	0.3"	28.00
65F134	923718	65F2309	923690-28	28	0.6"	28.00
87F4070	923719	87F6086	923690-32	32	0.6"	29.54
65F136	923722	65F2311	923690-40	40	0.6"	32.60

GOLD-PLATED DIP TEST CLIPS—FIG. 2

Stock No.	Mfg. Part No.	Connector Compatible		Pins	Dim.	Price Each
		Stock No.	Mfg. Part No.			1-9
46F2122	923743-14	46F2125	923743-14	14	0.3"	14.93
46F2123	923743-16	46F2126	923739-16	16	0.3"	15.31

SOIC TEST CLIPS—FIG. 3

Small outline integrated circuit (SOIC) test clips are designed for smaller components and higher densities. Industry standard 0.025" (0.635) square contact pins on 0.050" (1.27) centers. Centers are staggered to allow easy attachment of female socket connectors or wire wrapping and help prevent shorting of adjacent probes. Stacking of SOIC's as close as 0.050" (1.27) end-to-end. Available in alloy or gold plating.

ALLOY 764 SOIC TEST CLIPS

Mfg. Part No.	Description	Stock No.	Price Each
923660-16	16-Pin Wide Grip 0.440"W (11.18)	46F2108	14.07
923660-20	20-Pin Wide Grip 0.540"W (13.72)	46F2114	16.33
923660-24	24-Pin Wide Grip 0.640"W (16.26)	46F2115	16.85

GOLD-PLATED SOIC TEST CLIPS

Mfg. Part No.	Description	Stock No.	Price Each
923665-16	16-Pin Wide Grip 0.440"W (11.18)	46F2117	13.69
923665-18	18-Pin Wide Grip 0.490"W (12.45)	46F2118	16.28
923665-28	28-Pin Wide Grip 0.720"W (18.29)	46F2121	19.95

(3805)

GREAT ONLINE RESOURCES



TechCast Product Training
Technical training modules provide specific application guidance for the latest products & more.
www.newark.com/techcast

"MY ACCOUNT" eSuite

Track your current purchases, view your complete order history and invoices, and turn a Newark quote into an instant online order.
www.newark.com/esuite



New Product Portal
Click here to find the newest products and technologies we add each week.
www.newark.com/new

Selector Tools

Use special online tools to fast track selection for custom power supplies, connectors, re-reeling and more.
www.newark.com/selectors



New products added weekly



See the newest products, technologies and suppliers on our website.

(148888)

(148862)

Make it easy. Make it fast. Make it Newark.